

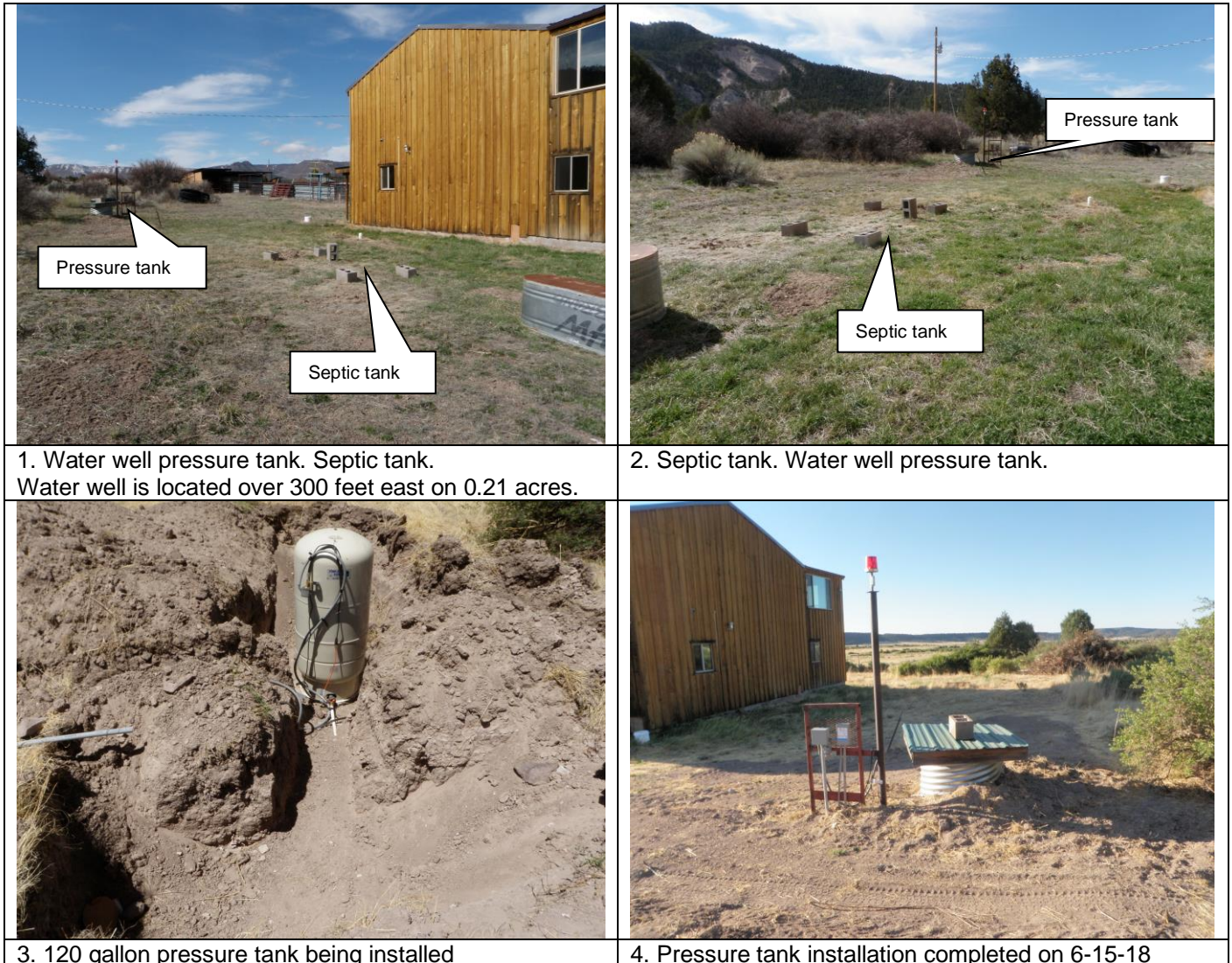
House septic tank, water well, and water well pressure tank locations.

The septic tank is buried and not visible above ground. If the septic needs to be pumped, it is necessary to dig about 2 feet deep to access the tank by a concrete cover. A cleanout in the pipe from the house to the tank is visible above ground. To help identify the location of the septic tank, cinder blocks have been placed on the approximate corners of the tank as illustrated in the photos. Leach lines extend downhill and away from the tank and house. The septic tank and water well are separated by over 100 feet as permitted by Apache County.

The water well is located 350 feet east of the house and septic tank on 0.21 acre strip, about 30 ft wide and 310 feet long. See <http://www.ecbarranch.com/Pictures/well-L.pdf>. Access is by double gates.

The operation of the house water well requires an electric pressure switch to turn the pump on and off. The switch is controlled by water pressure in a pressure tank with approximate capacity of 120 gallons. As water in the tank is used, pressure is reduced to about 35 lbs and the pump turns on to build water pressure to about 60 lbs, then turns the pump off. A blinking light comes on when the pump is operating.

The pressure tank and switch are buried below ground and accessible by a 4x4 ft access cover. The tank is insulated and the switch has electric heat tape that can be turned on in the winter. The well pump has a 220-volt breaker switch in the meter loop breaker panel on south side of the house.

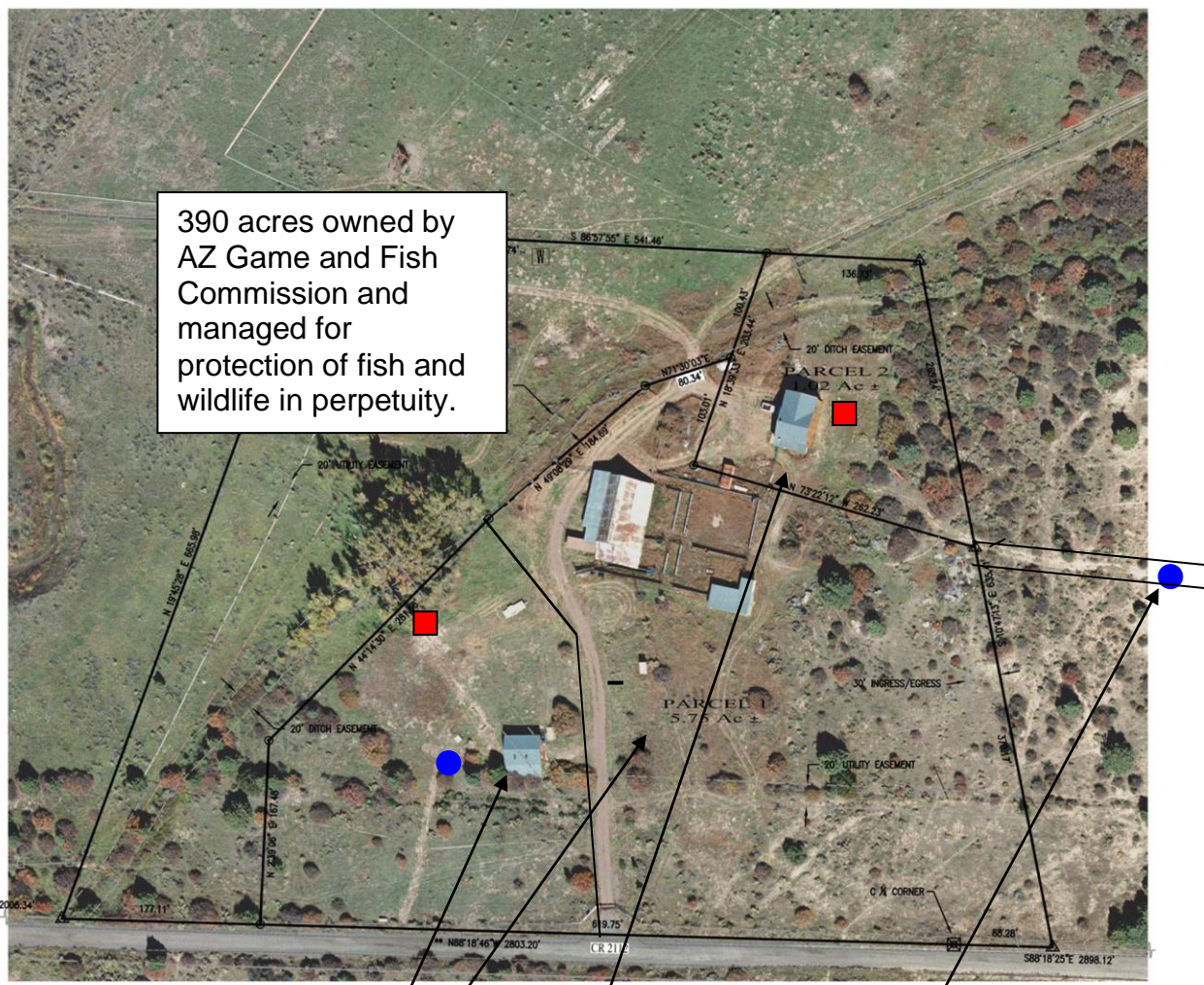




5. Wellhead about 450 feet east of house on 0.21 acres



6. House is west of wellhead on 0.21 acres



Aerial map of parcels for sale at #20 Apache County Road 2112, Nutrioso, AZ 85932:

- Parcel 1A – 1.87 acres with cabin
- Parcel 1B – 3.88 acres with barn
- Parcel 2 – 1.23 acres: 1.02 acres with 2-story house and 0.21 acres with well

● Water well ■ Septic tank

Property lines, easements, water wells, septic tanks, and features are approximate for illustration only.