

8-14-18

**Apache County Assessor plat map with parcels:**

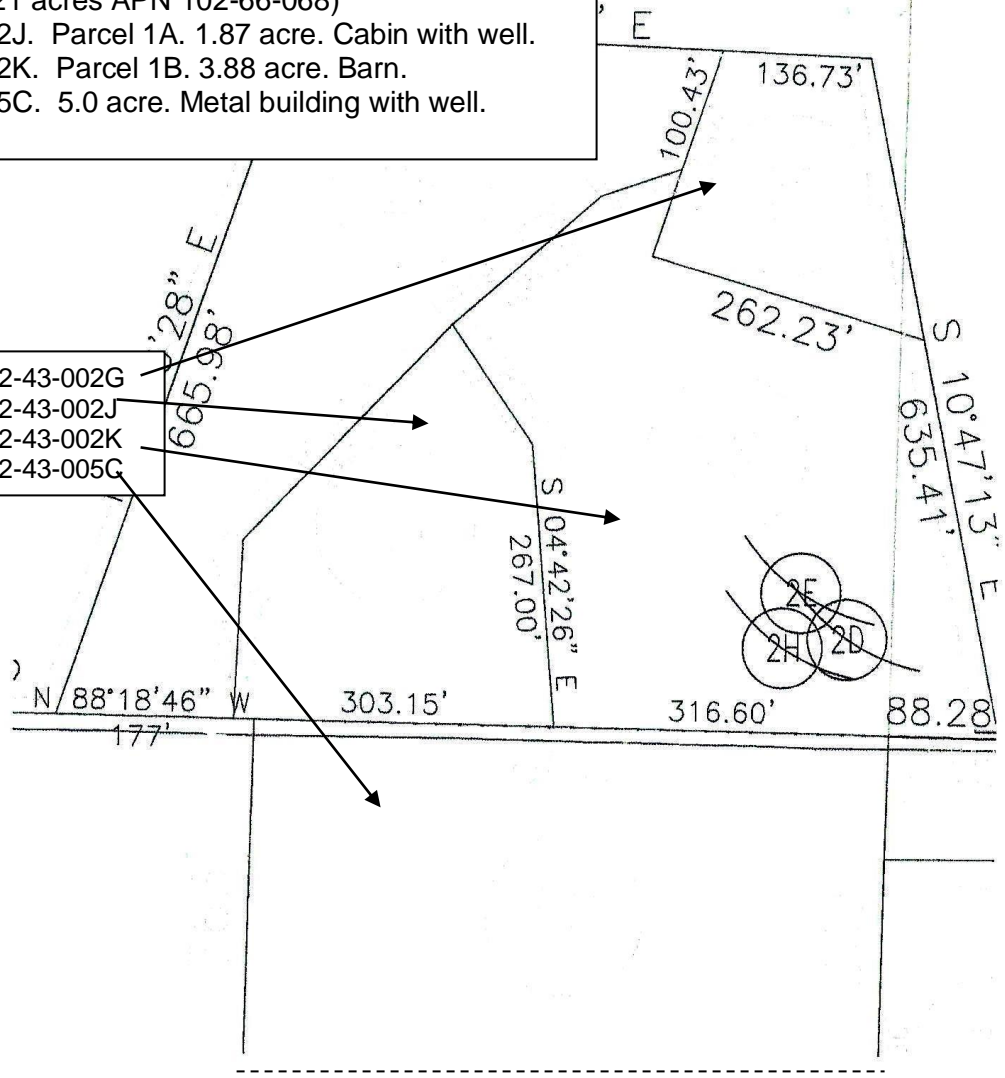
APN 102-43-002G. Parcel 2. 1.02 acre. 2-story house  
(water well on 0.21 acres APN 102-66-068)

APN 102-43-002J. Parcel 1A. 1.87 acre. Cabin with well.

APN 102-43-002K. Parcel 1B. 3.88 acre. Barn.

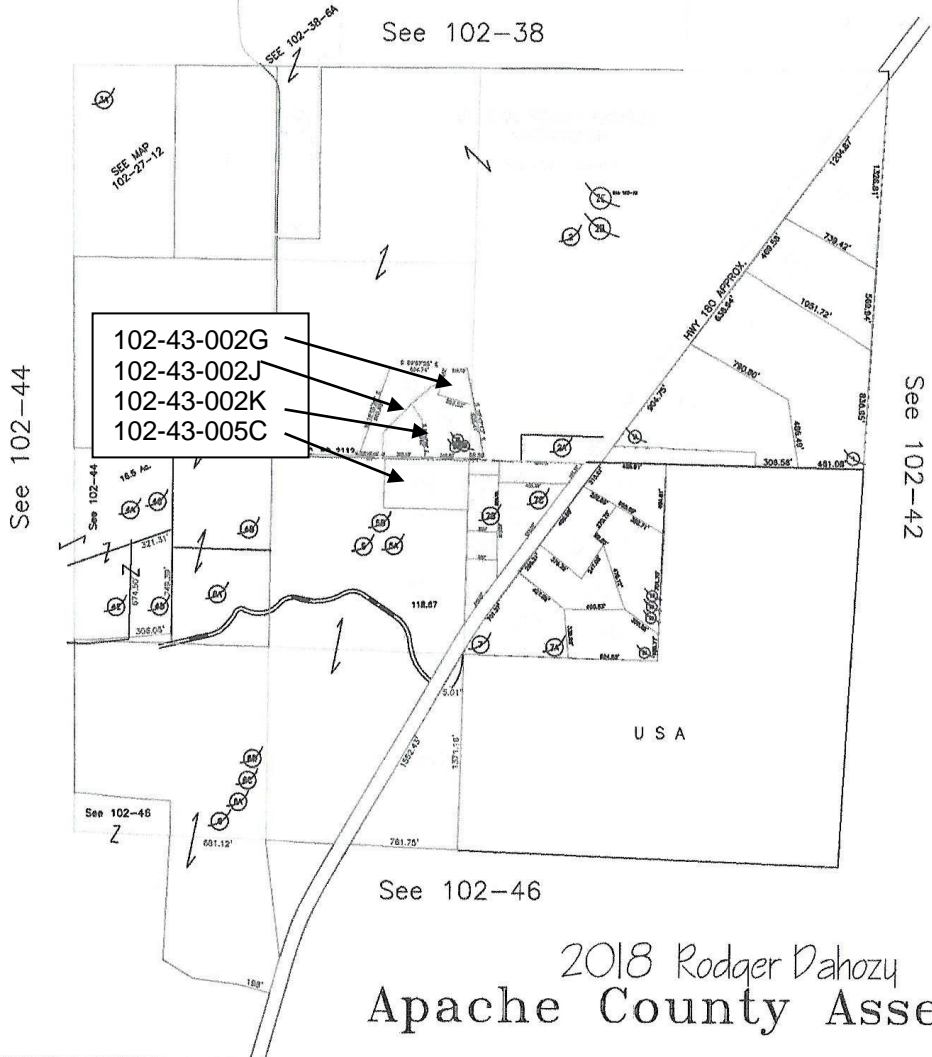
APN 102-43-005C. 5.0 acre. Metal building with well.

- 102-43-002G
- 102-43-002J
- 102-43-002K
- 102-43-005C



TOWNSHIP 07N RANGE 30E  
SECTION 29

102-4



2018 Rodger Dahozy  
Apache County Assessor